

Spring 2019
Symphony Band
Audition Material

Horn

SPRING 2019 SYMPHONY BAND AUDITION MATERIAL
HORN

Excerpts

1. The Pines of Rome, Mvt. I. The Pines of the Villa Borghese
Ottorino Respighi // Guy M. Duker

2. The Pines of Rome, Mvt. I. The Pines of the Villa Borghese
Ottorino Respighi // Guy M. Duker

3. The Pines of Rome, Mvt. IV. The Pines of the Appian Way
Ottorino Respighi // Guy M. Duker

4. Mars from 'The Planets'
Gustav Holst // Christiaan Janseen

5. Pictures at an Exhibition, Mvt. I. The Gnome
Modest Moussorgsky // Maurice Revel

6. Pictures at an Exhibition, Promenade
Modest Moussorgsky // Maurice Revel

7. Pictures at an Exhibition, Mvt. 7. The Market Place
Modest Moussorgsky // Maurice Revel

1st F Horn

THE PINES OF ROME

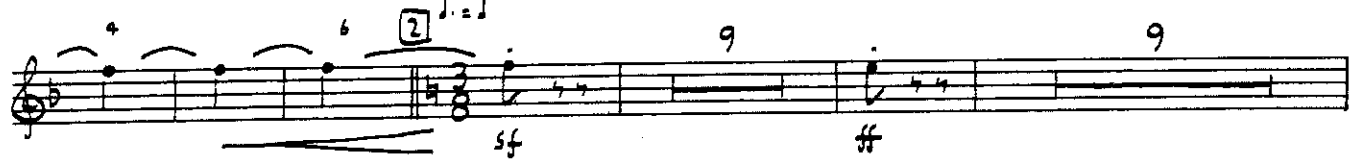
OTTORINO RESPIGHI

Transcribed by GUY M. DUKER

I. THE PINES OF THE VILLA BORGHESE

Allegretto vivace $\text{♩} = 92$ 8

#1 [1]



#2



"Property of Troy University Bands"

1st F Horn

rall. 2 a tempo più lento 12

IV. THE PINES OF THE APPIAN WAY

Tempo di marcia 5 **MUTED** **18**

3 6 **PP** **PPP**

19 11 **20** 3 PARTI MNS, BSSMS. 2 **OPEN** **mf**

cresc. a poco 2 a poco

mf

3 5 5 **f** cresc.

21 **ff**

ff 3 3

fp cresc. **#3** **22** **fff**

3 3

3 3

stent. 3 3

Mars

Horn

80 *f* 1. 2. 3 3 3 1. 2. 3 3

5 *ff* $d = d$ 1. 2.

6 *p* *cresc.*

#4

104 *p* *cresc.*

108 7 3 *fff*

111 3 3 1. 2.

117 1. 2.

123 1. 2. 3

131 8

137 6 *f* 9

147

45 11 Poco meno mosso, pesante

Musical staff 45-52 in C major, 4/4 time. It begins with a treble clef and a key signature of one sharp (F#). The music consists of eighth and quarter notes with some rests. A dynamic marking of *mf* is present.

53 **Vivo** 12 Meno mosso

Musical staff 53-60 in C major, 3/4 time. It begins with a treble clef and a key signature of one sharp (F#). The music consists of quarter and eighth notes. A dynamic marking of *mf* is present.

61 13 Vivo 14 Meno mosso

Musical staff 61-67 in C major, 3/4 time. It begins with a treble clef and a key signature of one sharp (F#). The music consists of quarter and eighth notes. Dynamic markings include *ff* and *mf*.

68 **Vivo** 14 Meno mosso 15 16

Musical staff 68-75 in C major, 3/4 time. It begins with a treble clef and a key signature of one sharp (F#). The music consists of quarter notes and rests. Dynamic markings include *ff* and *poco a poco accel.*

98 17 *tr* 18

Musical staff 98-105 in C major, 3/4 time. It begins with a treble clef and a key signature of one sharp (F#). The music consists of quarter notes and rests. Dynamic markings include *mf*, *ff*, and *ff*.

#6 Promenade
Moderato comodo assai e con delicatezza

Musical staff for "Promenade" in C major, 6/4 time. It begins with a treble clef and a key signature of one sharp (F#). The music consists of quarter and eighth notes with some rests. Dynamic markings include *p* and *mf*. The piece ends with a *rit.* marking.

2. The Old Castle
Tacet

23 69

f *ff* *p* *mf* >

28 70

mf *mp* *pp* *mp* *ff*

34 71 **Meno Mosso**

p *ff* *p* *ff* *f* *ff*

38 attacca

poco accel.

8. Catacombs (A Roman Sepulchre)

72 **Largo**

p *ff*

10 73

pp *ff* *p* *pp*

21 74

p *ff* *f* *p* *pp*

With the Dead in a Dead Language

Andante non troppo, con lamento

75 77

p

16 78 *con sord.*

p *pp*