

**SPRING 2018
SYMPHONY BAND
AUDITIONS**

STRING BASS

Spring 2018 Symphony Band Audition
String Bass

Excerpts:

1. *Piano Concerto No. 2, Mvt. I*
Shostakovich // trans: Marco Pontini
Tempo marking: ♩ = 160
2. *Piano Concerto No. 2, Mvt. II*
Shostakovich // trans: Marco Pontini
Tempo marking: ♩ = 76
3. *Piano Concerto No. 2, Mvt. III*
Shostakovich // trans: Marco Pontini
Tempo marking: ♩ = 176
4. *Duende, Mvt. 2*
Alarcón
Tempo marking: ♩ = 126

Movement I

Allegro $\text{♩} = 100$

6 8 8

① ② ③

mf

25

30

④

35

#1

⑤

mf *f*

41

45

pizz.

⑥

p

50

55

⑦

60

⑧

23



258



262



Movement II

24

Andante $\text{♩} = 76$

25



280



287

poco rit.

a tempo

27

poco rit.



28 a tempo



310

arco

29

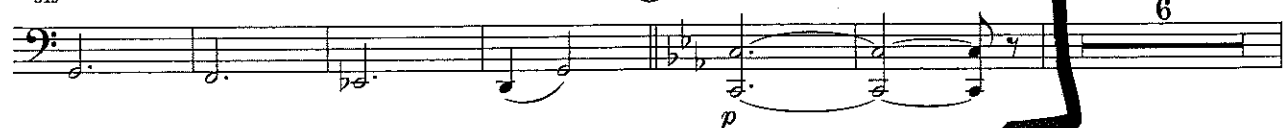


315

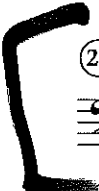
poco rit.

30

a tempo



#2



539 (50) $\text{♩} \text{♩}$

p *pizz. mp*

545

551

(51) 7 (52) arco

569 #3

p cresc. *f*

574

578

582 (54) 7 (55) $\text{♩} \text{♩}$ 3

f

595

603 (56)

f *f* *f*

612

f *f* *f*

#4

Electric Bass

Animato (♩ = 126)

Solo [1]

mf

3

f

5

mf

7

f

9

marcato

fp

3 sfz mf

10

12

f

15

mf

f

18

20

sfz f sfz mf cresc.

22

3 5

mf f sfz

30 40

5 2 6 10 6 16

f

42

f

[1] In case of playing this movement without electric bass.

[1] Si no se dispone de bajo eléctrico, los primeros 10 compases serán